

To Pastor K.C. and the Council and Congregation of
Faith Community Church,

Thank you for the invitation to come alongside Faith Community to provide design for the enhancement of the church Narthex. The following proposal is one we believe accomplishes the goal to create an updated and welcoming environment for a growing body of both church members and guests alike. As we have prepared this proposal we have tailored our design around the church’s positioning for “Deep Roots, Fresh Growth”.

In summary, as a result of the process of design discovery and development, it is recommended that the scope of work be expanded to best accomplish the goals and design intent for the Narthex Improvements.

Due to the expansion of the recommended improvements from the initial scope ofwork, the totaled estimated costs are higher than originally budgeted. We believe these additional costs will best capitalize on the investment of funds dedicated to this project and toward the greater goal of furthering the mission and vision of the church.

Blessings,
Amy Vande Streek and Elizabeth Boggia

Phase I
Initial Scope

Painting	\$7,500
Starting Point	\$23,000
Lighting	\$6,500
Signage	See Phase II
Subtotal (approximate)	\$37,000

Phase I
Additional Scope

Flooring	\$10,500
Branding	\$7,500
Side Door	\$4,000
Ceilings	\$3,000
Subtotal (approximate)	\$25,000
Subtotal Phase I	\$62,000
Contingency 10-15%	\$9,000
Total Phase I (approximate)	\$71,000

Notes
-All expenses shown are based on actual contractor quotes and are estimations only.
-Narthex, Vestibule, Ceiling, Stairwells, Refinishing of Exterior Front Doors
-Alcove Redesign, New Coat Closets, New Welcome Furnishings
-Replace all existing fixtures in Narthex, Additional fixtures in stairwells
-Recommendation to create new logo and brand guide prior to designing fixed signage
-Does not include signage
-Recommended additions to the intital scope of work
-New Carpet in Narthex, Stairs, Sanctuary Aisles (not including stage), Entry Vestibule
-Estimate for graphic designer to guide rebranding (logo design, typography, etc.)
-New full glass door, hardware and installation at Narthex side entry
-New sheetrock celings in Narthex and at bottom of stair to basement
-Approximate cost for project management and minor change orders
-Approximate total cost for Intial and Additional Scope to Narthex Improvements

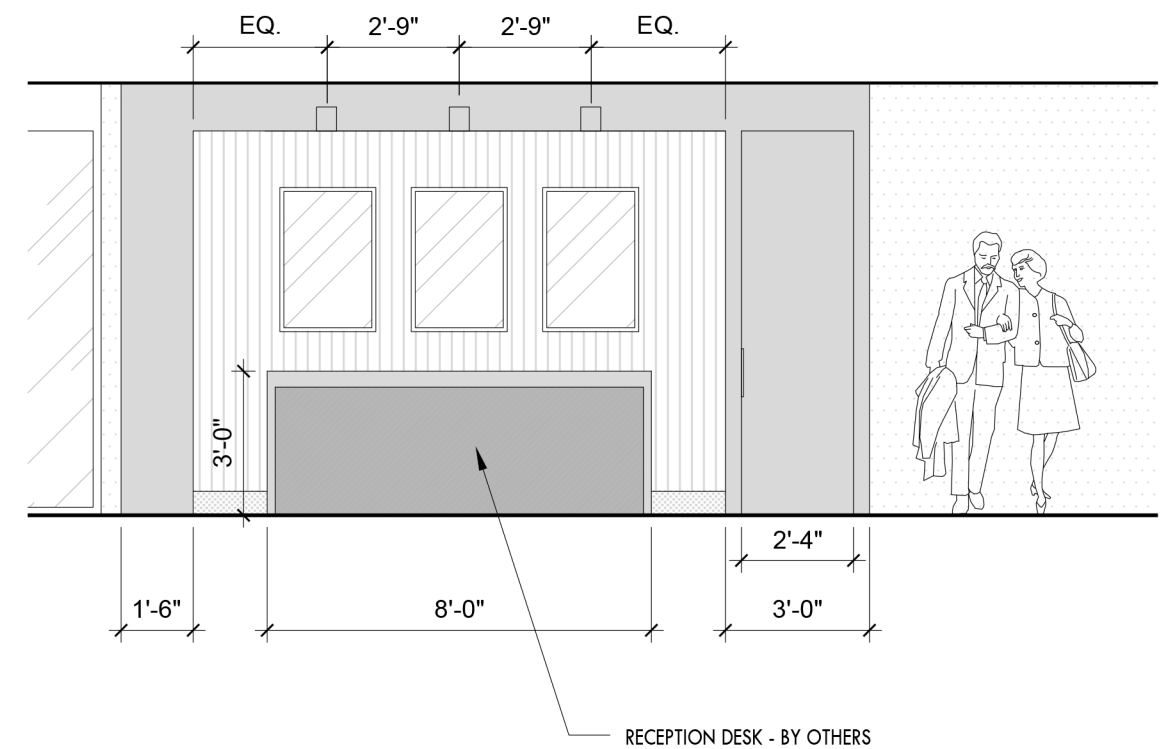
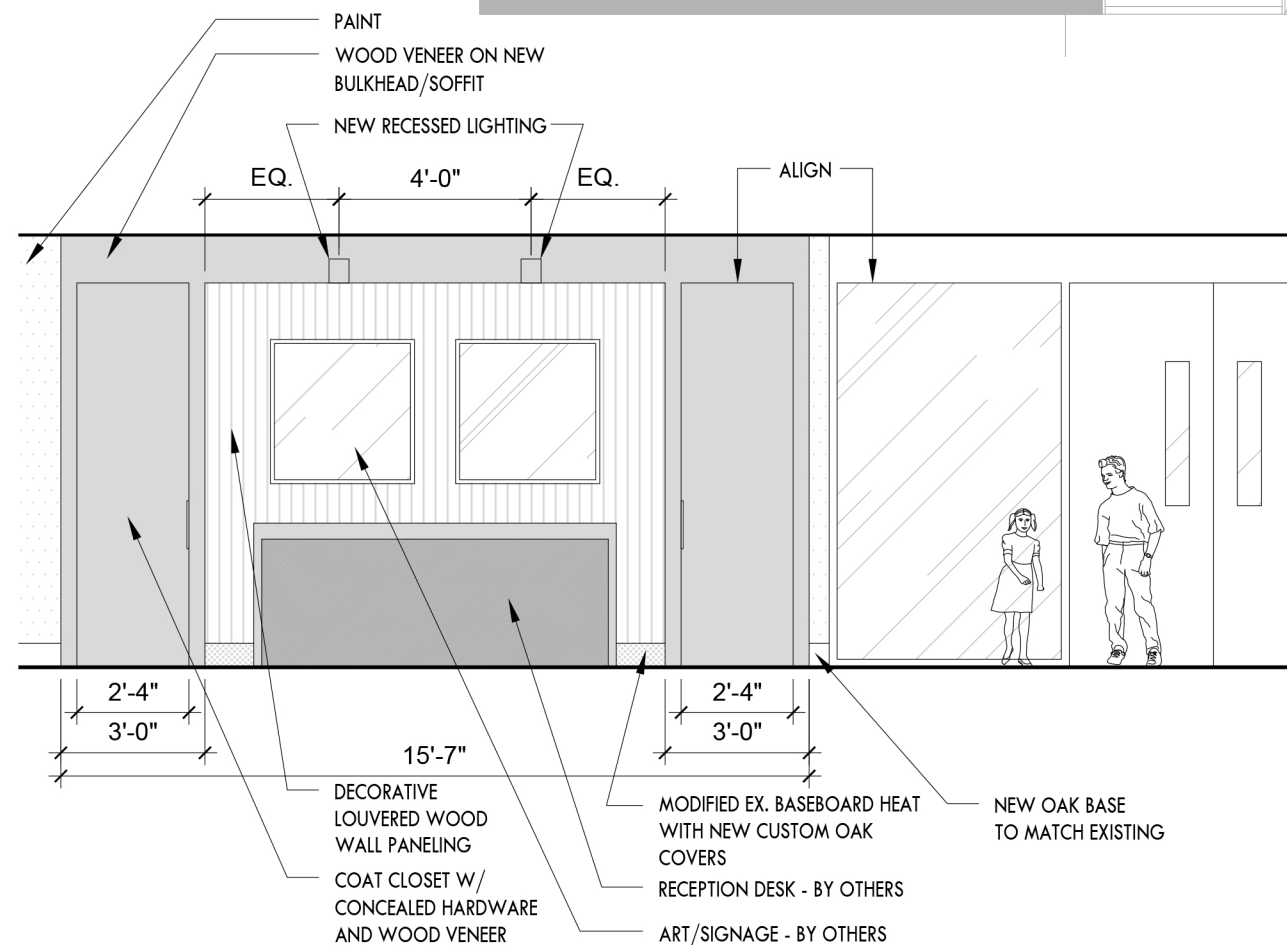
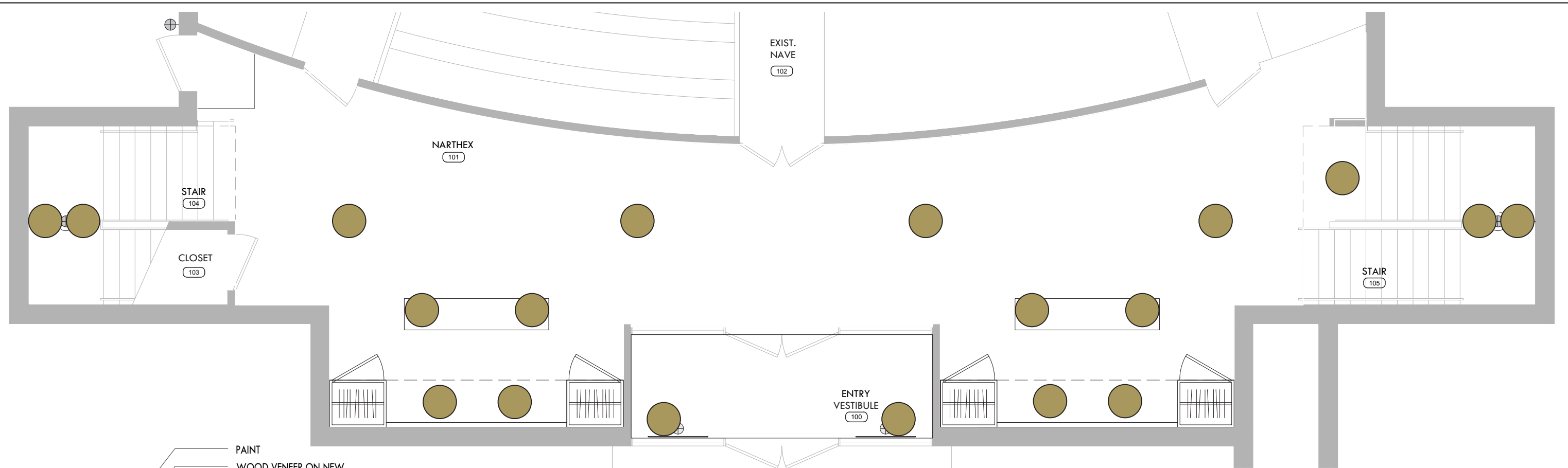
Phase II

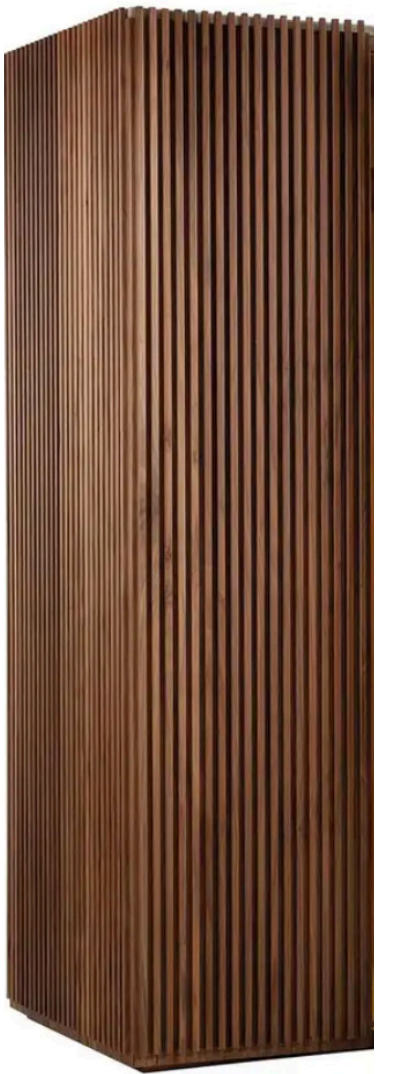
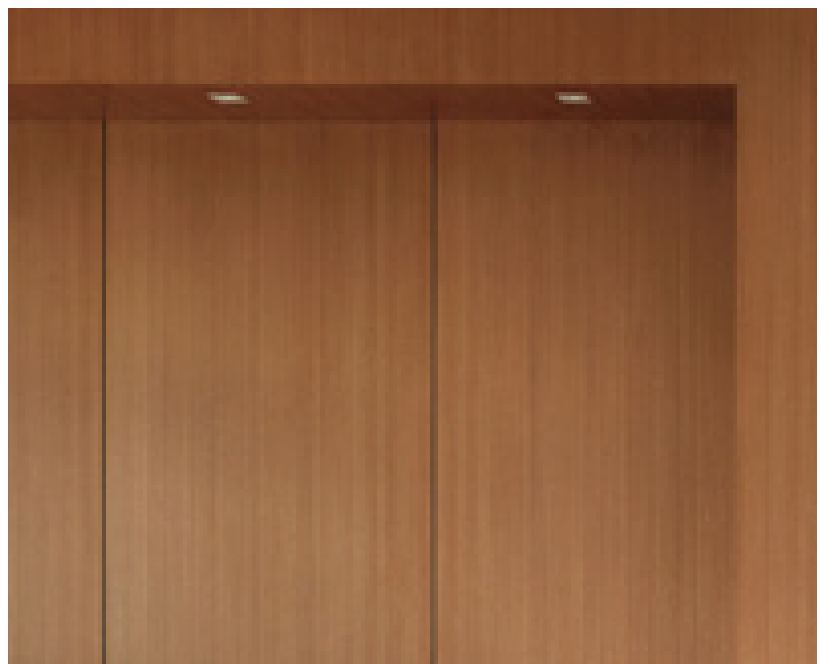
Signage Design / “Branding Application”	TBD
Signage Labor and Materials	TBD
Print Materials (Business Cards, Letterhead)	TBD

Future

Website Redesign	TBD
Professional Photography/Videography	TBD
Flooring - Sanctuary	TBD

-Estimate to design signage based on rebrand
-Cost of labor and materials to create and install signage
-Expenses for new print materials to coordinate with rebrand
-Extension and implementation of rebranding
-Extension and implementation of website redesign
-Replace stage/choir loft flooring





Inspirational images are intended to communicate a conceptual architectural and material mood only.

Images shown are not specifically recommended for Faith Community Church.